



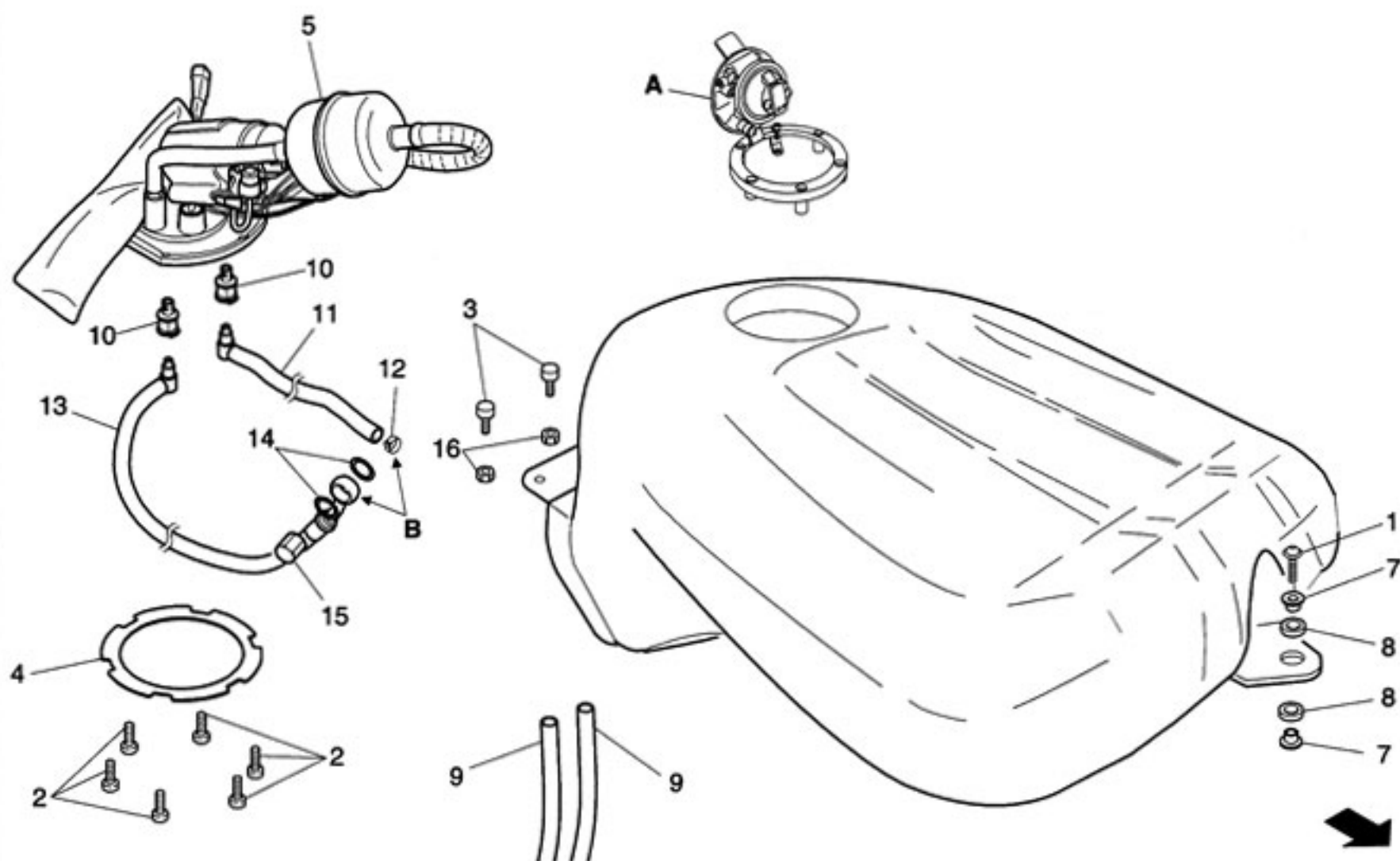
Mondial Moto s.p.a.

**SERBATOIO CARBURANTE - POMPA CARBURANTE**  
**FUEL TANK - FUEL PUMP**
Sez.  
Sect.**F**Tav.  
Tab.**13**

Piega

Cod. # MRBP010007.6

Release: 00/2003-07



Ref.	Descrizione	Description	Year	Version	Cod. #	Q.ty
A	Vedi Tav. F08	See Tab. F08				
B	Vedi Tav. E18	See Tab. E18				
1	Vite M8x30	Screw M8x30	-	-	2010360830.0	1
2	Vite M6x16	Screw M6x16	-	-	2010480616.0	6
3	Silent-block	Silent-block	-	-	MIAP010232.4	2
4	Guarnizione pompa benzina	Gasket, fuel pump	-	-	MIAP010136.4	1
5	Pompa benzina	Fuel pump	-	-	MIAP010021.5	1
6	Serbatoio carburante 21 ℓ	Fuel tank 21 ℓ	-	Gr (*1)	MIAP010353.4	1
			-	N (*1)	MIAP010354.4	1
	Serbatoio carburante 17 ℓ	Fuel tank 17 ℓ	-	Gr (*2)	MIAP010372.4	1
			-	N (*2)	MIAP010373.4	1
7	Bussola	Bush	-	(*1)	MIAP010130.3	2
			-	(*2)	MIAP010130.3A	1
8	Gommino fissaggio serbatoio	Rubber element, tank	-	-	MIAP010292.4	2
9	Tubo sfiato serbatoio	Breather tube, fuel vapour	-	-	MIAP010127.4	2
10	Innesto rapido benzina maschio	Male quick-release fuel coupling	-	-	MIAP010138.4	2
11	Tubo benzina ritorno	Fuel return tube	-	-	MIAP010141.4	1
12	Fascetta	Clamp	-	-	2151000145.0	1
13	Tubo benzina mandata	Fuel delivery tube	-	-	MIAP010142.4	1
14	Rondella	Washer	-	-	2030000012.0	2
15	Dado cieco	Nut, sealing	-	-	MIAP010105.3	1
16	Dado	Nut	-	-	2020910006.0	2

(\*1) = fino al telaio/up to frame # ZA9SP102PG7100078

(\*2) = dal telaio/as of frame # ZA9SP102PG7100079